



Marketing Excellence
RGT INTERNATIONAL SDN BHD
C O M P A N Y
P R O F I L E

CONTACTS

MALAYSIA OFFICE

Office Suite 2009, Level 20, The Pinnacle, Persiaran Lagoon
Bandar Sunway, Subang Jaya, Selangor Darul Ehsan
47500, Malaysia

NITIN@RGTTINTL.COM
INFO@ROYALTECHENTERPRISE.COM

tel. +603 5624 4234
fax. +603 5624 4201
mobile. +6011 3906 6569

DUBAI OFFICE – HEAD QUARTERS

M-1, Al Harthi Building
Opposite Dubai Customs
11746, Dubai - UAE

INFO@ROYALTECHENTERPRISE.COM
NITIN@ROYALTECHENTERPRISE.COM

tel. +971 4 3552920
fax. +971 4 3552926
mobile. +971 52 8579000



INTRODUCTION

Royalpex Dubai has taken the initiative to market their products in Malaysia, by establishing and investing into a marketing company RGT International Sdn Bhd which

will promote the products which Royalpex has an expertise in for the last decade selling into Middle East region.

RGT International shall promote a few of its products range for Malaysia based precast companies. RGT International has been appointed by their principles Tyrolit a Swarovski group company specializing in manufacturing products and machinery for cutting applications of concrete and reinforced steel in concrete. We have specialized concrete cutting machinery and blades to cut pre-stressed concrete elements, whether hollow core slabs, solid sections, I-beams or railway sleeper.

Focus Industry

Marketing Royalpex Group specialized industrial products in Malaysia for Precast Industry. Our presence in Malaysia shall ensure customers of better communication and support.

Industrial Application

We shall offer an extensive assortment of Tyrolit diamond tools to the prestressed concrete, hollow brick refractory industries for the processing of all kind of materials. Thanks to the cooperation of over a decade long business relationship with our customers in Middle East and South East Asia, RGT Intl. and Tyrolit Middle east have developed a wealth of practical experience to call on when solving difficult applications.



Quality and excellence is our goal. To meet market demand and to compete with new technologies, we continuously innovate to provide complete customer service and stakeholders’ satisfaction.



TABLE OF CONTENTS

| | |
|-----------------------------------------|---|
| INTRODUCTION | 2 |
| PRESTRESSED CONCRETE | 3 |
| APPLICATION GALLERY | 4 |
| WE SOURCE AND SUPPLY GLOBALLY | 5 |
| OUR VENDOR | 6 |
| AUTHOURIZES AGENT FOR SOUTHERN PC STEEL | 7 |
| PRECAST ACCESSORIES | 8 |
| ABOUT ROYALMEX GROUP | 9 |

PRESTRESSED CONCRETE

Precast is the most economical method to cut pre-stressed concrete elements to the desired length is to use diamond saw blades.

Precast concrete is used extensively in building structures, for e.g. structural frames, floors and roofs, claddings etc.

Use of Precast Concrete in frames

There are two main types of precast building frame. The structural frame consists of slabs, beams and columns. Structural frames are mainly used for offices, car parks and retail developments.

The cross-wall frame consists of floor slabs and solid walls. It is used mainly for hotels, schools and hospitals.

Use of Precast Concrete for Floors

Each year the industry makes about 5 million square meters of precast floor slabs. That's equivalent in area to 714 football pitches.

The reason for their success is

Fast construction, Economic production, Standardized cross=section Good strength to weight ratio Smooth surface finishes

Use of Precast concrete in Cladding

Precast concrete cladding may be used as a structural element.

PRECAST PLANT

Eastern Pretech Precast plant at Seelong, Johar, Malaysia manufacturing hollow core slabs. Casting concrete slabs in the plant on beds and then are cut into sizes and lifted and stacked on trailers to be exported to sites for erection.



CASTING HOLLOW CORE SLABS

The Hollow core pre-stressed slabs are casted on beds. First, strands are being pulled & stressed through stressing machine. Concrete is then transferred to the concrete distributor machine from flying bucket. Casting is carried out in two layers namely bottom layer and top layer. Vertical cutouts are being made on fresh concrete and horizontal cutouts after the concrete is hardened.



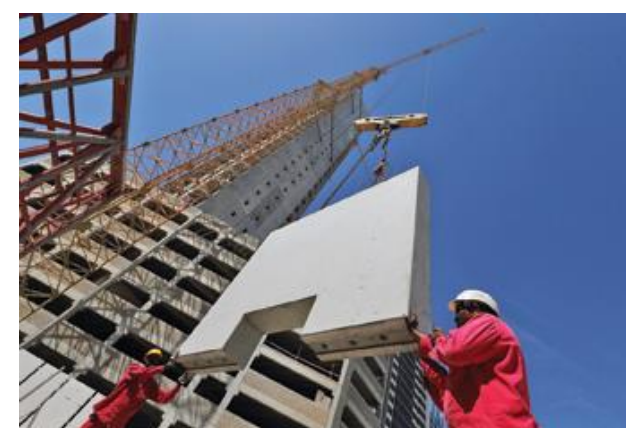
CUTTING PRECAST ELEMENTS

Once the elements are cured, hollow core slabs are cut into pieces of required size.



LEFETING PRECAST ELEMENTS

Hollow core slabs are lifted and sent to stockyard. Hollow core slabs are transported to the site in special transportation racks that are lifted and placed onto the trucks.



ERECTING PRECAST ELEMENTS ON SITE

Panels are brought in by trucks and erected into place. Panels are lifted into the floor by inserting the vertical reinforcing bars protruding from the floor slabs into large holes in the panels. These large holes are called dross backs. The panels are vertically positioned on the floor slabs, so the reinforcing rods from the floor fit perfectly into the dross backs. Once in position, grout is pumped into the lower of the small holes on the side of the panels filling the tube and locking it to the reinforcing bars



MACHINERY

Saw machinery is designed for cutting prestressed products like hollow core slabs, T beams and planks. It is the right solution for a producer who needs automated cross, longitudinal and diagonal cutting. One of the leading technologies Elematic cutting technology is based on completely modern and safe design, utilizing the latest electronic controls. And the saw blades used are consumables.



APPLICATION GALLERY

Precast is increasingly a mainstream construction method

and is particularly suited to mixed construction because it is readily interfacing with virtually all other construction materials. Combining precast concrete with steel, cast in-site concrete and glass maximizes the benefits of each material. Interest in mixed construction is growing with the wider availability of prefabricated elements which can be mixed and matched to produce new construction solutions, tailored to specific design requirements.

The strong growth of construction activities in Singapore and the region against the shrinking resource, skilled labor and tight timeline has turned the spotlight on Precast again to achieve higher productivity and sustainability. There is growing awareness that precast realizes more of the potential of concrete by greatly reducing the amount of formwork, scaffolding and wet concrete onsite. It is also, more environmentally friendly in that the amount of construction waste on site is also greatly reduced.



PRECAST SOLUTIONS BUILD

Bridges, Metro lines, Railway Sleeper beds, Tunnels, Beams for buildings, building structures, villas, staircase, parking lots, concrete furniture etc.



WE SOURCE & SUPPLY GLOBALLY

We are a team of professionals with strong technical and commercial skills who have experience in sourcing and supplying globally.



Anil Kumar Sethi - Founder

Mr. A.K Sethi the Founder of ROYALMEX Group. An Engineer by profession and an double Masters Graduate from Indian Institute of Management in Ahmedabad (IIM-A) India, and Michigan University, USA,. Mr. Sethi professional experience encompasses of 30 years in Senior Management position of the renowned Indian Multinational Tata Group.

Held positions such as Vice President and Head of Tata West Asia based in UAE, also held the title of Director IT Saudi based Al Zamil & Tata West Asia joint venture; and had created a strong network and contact base in the Global business arena.

A member of (CII) Confederation of Indian Industries, attended the World Economic forum in Jordan Dead Sea representing the TATA GROUP as a leading multinational organization and giving his valued feedback to the world industrial growth plans.

His vast experience has drawn out our moto to always strive for marketing excellence and the Group has grown many folds under his able guidance and leadership.



OUR GLOBAL REACH

Regions we supply to and source from
 Middle East
 South East Asia
 Europe
 Asia
 Africa
 South America



TYROLIT HEAD
QUARTER IN AUSTRIA

OUR VENDOR



TYROLIT GROUP

TYROLIT is a leading manufacturer grinding tool, cut-off tool, sawing tools and drilling tools.

Worldwide the TYROLIT Group belongs to the leading suppliers, which offers grinding tools with abrasives in all grit and bond types as well as a comprehensive range of dressing tools.

The TYROLIT world brands have not only won an outstanding position in the global marketplace. They are worldwide known brand families and represent the performance potential of over 80,000 different TYROLIT products.

Innovation is a driving force in this process. TYROLIT customers profit from extensive advice: economic and ecological solutions are worked out together with TYROLIT.

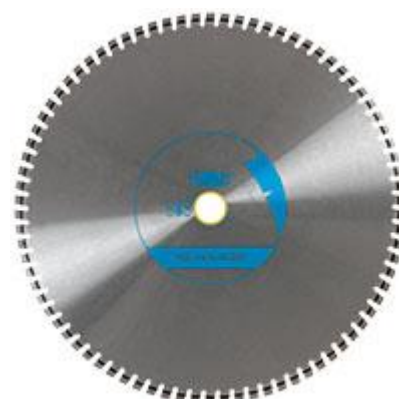
Embedded within the dynamic internationally active entrepreneurial Swarovski Group, TYROLIT has the independence and support to realize its long-term corporate objectives.

TYROLIT provides security: we consider quality to be of paramount importance to provide you operational reliability and to ensure the safety of your operators.



CORING MACHINES

Drill motors and drill rigs for drilling diameters up to 1000 mm.



PRECAST SAW BLADES

Tyrolit Diamond blade specifications support you to optimize cutting of pre-stressed concrete elements, whether hollow core slabs, solid sections, I-beams or railway sleepers.



CORING BITS

Drill bits for wet, dry and tile drilling.



WALL SAWS

Electric wall saws and hydraulic wall saws for cutting depths up to 1 005 mm.



RING SAWS

Hydraulic and petrol-powered ring saws for cutting depths up to 400 mm.



RING SAW BLADES

They impress with their excellent cutting performance and long lifetime - also optionally available with TYROLIT TGD® technology.



AUTHORIZED AGENCY FOR MIDDLE EAST



Southern PC Steel Sdn. Bhd. is a leading manufacturer PC Strands, PC Bars, PC Wire in Malaysia..

Southern PC Steel was established in 1980 as a subsidiary of BHP Billiton from Australia and later has changed the ownership under the Berjaya Group. In 1993 it became part of Southern Steel Group and renamed as Southern PC Steel Sdn Bhd.

It was the pioneer for sales and manufacturing of the Prestressed Concrete Products in this region like PC Strand, PC Wire and PC Bar. SPC is recognized as the market leader both locally and globally since its establishment. Currently more than 50% of the products are exported to various countries, such as USA, ASEAN region, Australia, Europe and many other developing markets

Southern PC Steel Sdn Bhd's PC strand and wire products are manufactured under stringent quality management control procedures and in compliance with international standards and specifications. The company has obtained ISO 9001:2000 Quality Management System and other product certifications.

Its strong shareholder line-up include Hong Leong Manufacturing Group Sdn Bhd and Signaland Sdn Bhd which are members of Hong Leong Group Malaysia, and the Group's founding families based in Penang. Hong Leong Group Malaysia is among the top ten diversified conglomerate in Malaysia. The founding families of the Group have businesses spanning from rubber products manufacturing, branded retailing, financial services to property development.

Moving forward, Southern Steel Group will continue the journey towards achieving world class standard and to ensure continuous customers satisfaction.



PC STRANDS

Low relaxation High Carbon Prestressed Concrete Strand

Size 9.53mm, 12.7mm, 12.9mm, 15.2mm, 15.24mm and 15.7mm

Specification ASTM A416, ASTM A416M-05, BS 5896-80. AS 1311-87. MS1138:2007 Pt 4



PC WIRE

The rod is cold drawn and heat treated to various sizes.

Size 4.00mm to 9.00mm

Specification ASTM A 421-05, BS 5896-80, JIS G3536-91, AS 1310-87, MS1138:2007 Pt 2



PC BARS

Prestressed Concrete Steel Bar (PC Bar) can perform high tensile strength of over 1,400 MPa.

Size 7.1mm, 9.0mm, 10.7mm

Specification MS1138:2007 – Pt 3, JIG G3137, BS 5896-80



STEEL CHAMFERS

Steel profiles are manufactured from cold rolled steel and can be welded or bolted into place to provide relief from sharp edges to reduce chipping and spalling.



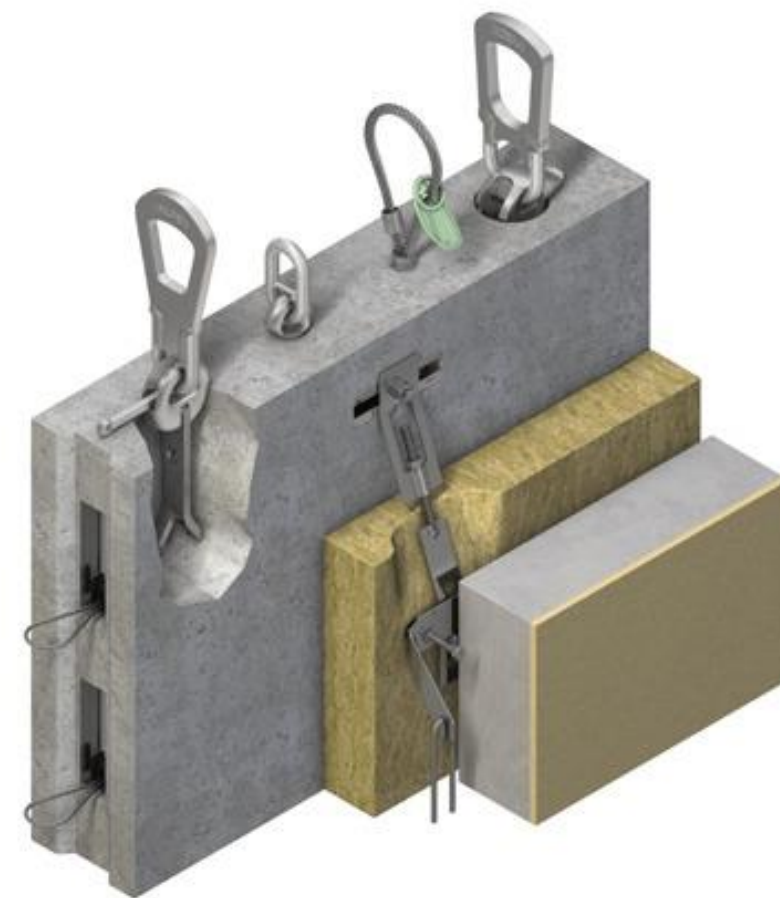
SHUTTERING MAGNETS

Shuttering magnets are fixed on steel frame for fixing forming recesses, enabling the pour to stop on steel formwork in production of precast parts. It can be removed easily from the formwork using a screw and a lever.



CONNECTING LOOP BOX

The Wire Loop Boxes are available in two versions, one Single Version & one Double Version including single & double wire rope loops respectively to ensure strength into the connection.



ERECTION ANCHORS

The Erection Anchor is designed for horizontal to vertical edge lifting and handling of thin-walled precast elements. The two "ears" on the head of the anchor prevent the Clutch from coming in contact and spalling the concrete. The "ears" transfer the shear loads into the anchor and concrete.



FIXING SOCKETS

These sockets offer a simple solution to fixing into concrete for locations where adjustment is either unnecessary or can be provided elsewhere.



LIFTING SOCKETS

Threaded Lifting Sockets are economic and have advantages in thin components, where the long tail provides excellent anchorage. The reinforcement tail is essential and must be installed and fitted to transfer the load into the concrete as shown.



SPHERICAL HEAD ANCHORS

The Spherical Head Lifting Anchor is made of a round steel rod with a forged foot and head. Forged using a special impact resistant steel, the range of Spherical Head Lifting Anchor has been specifically engineered to safely lift precast concrete elements in the most challenging of environments and site conditions.



RING CLUTCH / LIFTING EYE

The ring clutch is positioned in the recess surrounding the cast-in anchor and the locking latch is closed by hand, enabling the locking ring to engage with the anchor head. The clutch is thus connected with the anchor in a matter of seconds. The ring clutch can now be pulled in all directions to allow for lifting, rotating and pitching of the unit.



TWO HOLE ANCHORS

Two Hole Anchors are suitable for use where load distribution is not possible through the foot of a spread anchor and is done so by use of a reinforcement tail bar. They are particularly useful in thin wall panels and trusses, or where concrete strength is low.

QUALITY PRECAST ACCESSORIES

We supply quality precast accessories at most competitive prices with most efficient deliverables.

Established for over a decade as one of Middle east leading specialist construction accessory suppliers, Royalmex Group has built-up an enviable reputation for providing a wide product range together with a rapid and efficient service.

We are recognized as a market leader, supplying to most precast and construction companies, and our global partners with their manufacturing base help us maintain and enhance this prominent position.



ABOUT ROYALMEX GROUP



Royal MEX was established in early 2006 in UAE with an objective to take advantage of the opportunities of fast growing economy in the West and East Asian Region

Specializing in construction, engineering and service sector. Our focus is marketing engineering products, steel and steel products, welding consumables, for construction, precast, infrastructure and engineering industries. We also provide consultancy services.

Our suppliers, customer and stakeholders are our business partners and we believe in long term mutually profitable relationship. We source products from globally renowned brands having reliable quality manufacturing base whom we represent. Quality and Excellence are our morals which we constantly abide by. To meet the growing demands of our customers and compete with new technologies, we continuously invest in new products. We constantly look after the interests and varied demands of our customers.

Our Vision

Quality and excellence is our goal. To meet market demand and to compete with new technologies, we continuously innovate to provide complete customer service and stakeholders' satisfaction.

Our Mission Statement

Our mission is to go for an ongoing quest to offer compelling value and to meet market demands. We constantly seek out opportunities for growth, change and renewal of existing business to create a sustainable competitive advantage. Our stakeholders are our partners in our success.